



Unveiling the Ultimate **Guide:** **Navigating Configuration Path** **Discovery for Any Field in SAP**



SAP Knowledge Hub

We Are Here to Boost Your Career
Corporate Training || Classroom Training || Outsourcing



info@ambikeya.com||www.ambikeya.com||+917746805189

Unveiling the Ultimate Guide: Navigating Configuration Path Discovery for Any Field in SAP

Step 1: Introduction

Begin with an engaging introduction that highlights the importance of configuration paths in various fields, from software development to system administration. Explain why understanding these paths is crucial for efficient management and optimization.

Step 2: Understanding Configuration Paths

Provide a clear definition of configuration paths and their role in different contexts. Explain how configuration paths are used to locate and modify settings, preferences, or parameters within a system, application, or device.

Step 3: Common Fields and Examples

Discuss different fields where configuration paths play a pivotal role. Include examples from software applications, operating systems, network devices, databases, and more. This helps readers understand the diversity of scenarios in which configuration paths are relevant.

Step 4: Tools and Techniques

Introduce readers to various tools and techniques that can be used to find configuration paths. This could include command-line utilities, GUI-based methods, specialized software, and even coding scripts. Provide step-by-step instructions for using these tools with screenshots where applicable.

Step 5: Navigating Software Applications

Dedicate a section to exploring how to discover configuration paths within software applications. Explain how to access settings menus, search for specific options, and identify paths that lead to configuration files.

Step 6: Delving into System Settings

Detail the process of locating configuration paths in operating systems and system-level settings. Cover both Windows and Unix-like systems, guiding readers through control panels, configuration files, and registry entries.

Step 7: Networking Devices and Configuration

Explain how to find configuration paths in network devices like routers, switches, and firewalls. Describe accessing web interfaces, using command-line interfaces (CLI), and exploring management protocols like SNMP.

Step 8: Database Configuration Paths

Discuss database systems and how configuration paths are crucial for optimizing performance and security. Illustrate how to identify paths for modifying database parameters and settings.

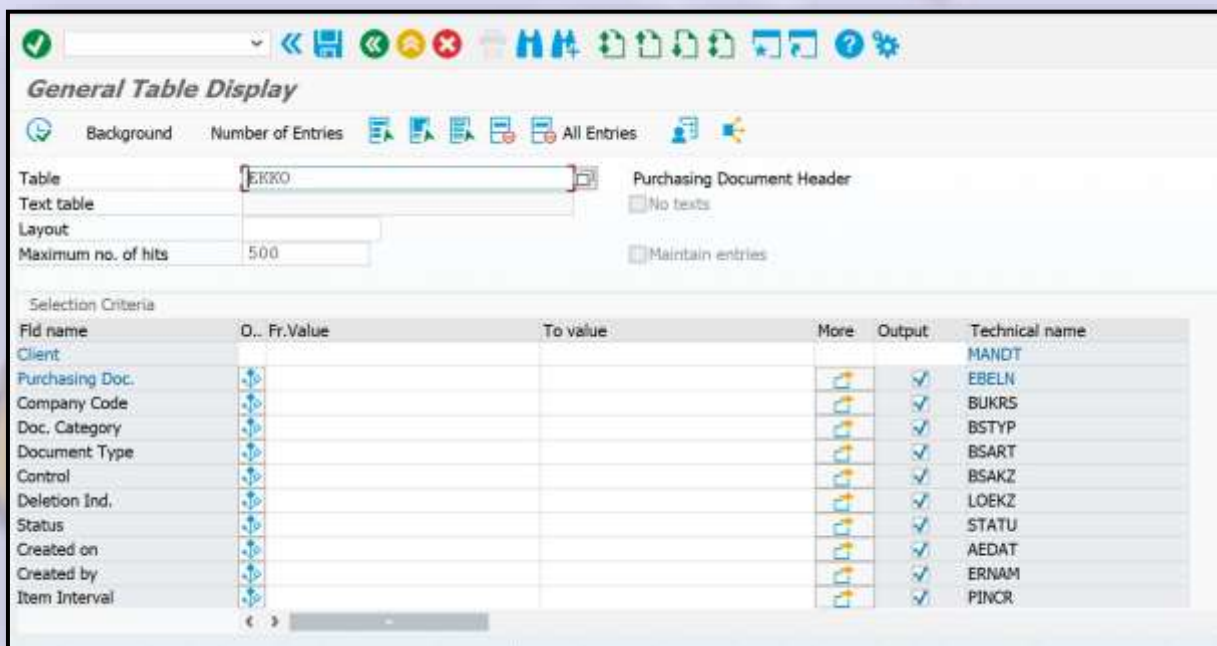
Sometime we encounter situations where the correct configuration path for a specific field is unknown.

We can follow the below steps to determine the configuration path for the desired field.

Example : We need to find the configuration for document types in the purchase order.

Step 1:

Execute transaction code SE16N to access the Data Browser and enter the relevant reference table. For example, in the case of purchase order document type configuration, input the appropriate table (Purchase order header – EKKO).



Tcode : SE16N

Step 2: Identify the field name associated with the desired configuration. In this example : for document type – Field name - BSART.

General Table Display

Background Number of Entries All Entries

Table: Purchasing Document Header

Text table: No texts

Layout: Maintain entries

Maximum no. of hits:

Selection Criteria

Fld name	O.. Fr.Value	To value	More	Output	Technical name
Client					MANDT
Purchasing Doc.				<input checked="" type="checkbox"/>	EBELN
Company Code				<input checked="" type="checkbox"/>	BUKRS
Doc. Category				<input checked="" type="checkbox"/>	BSTYP
Document Type				<input checked="" type="checkbox"/>	BSART
Control				<input checked="" type="checkbox"/>	BSAKZ
Deletion Ind.				<input checked="" type="checkbox"/>	LOEKZ
Status				<input checked="" type="checkbox"/>	STATU
Created on				<input checked="" type="checkbox"/>	AEDAT
Created by				<input checked="" type="checkbox"/>	ERNAM
Item Interval				<input checked="" type="checkbox"/>	PINCR

Step 3: Double-click on the table name, such as EKKO, to access detailed information about the table. (from step 2)

Dictionary: Display Table

Transparent Table: Active

Short Description: Purchasing Document Header

Attributes Delivery and Maintenance Fields **Entry help/check** Currency/Quantity Fields

Field	Data element	Data Ty...	Foreign K...	Check table	Origin
MANDT	MANDT	CLNT	<input checked="" type="checkbox"/>	T000	Input
EBELN	EBELN	CHAR	<input type="checkbox"/>		Expl
. INCLUDE	EKKODATA		<input type="checkbox"/>		
BUKRS	BUKRS	CHAR	<input checked="" type="checkbox"/>	T001	Input
BSTYP	EBSTYP	CHAR	<input type="checkbox"/>		Input
BSART	ESART	CHAR	<input checked="" type="checkbox"/>	T161	Input
BSAKZ	BSAKZ	CHAR	<input type="checkbox"/>		Input
LOEKZ	ELOEK	CHAR	<input type="checkbox"/>		
STATU	ESTAK	CHAR	<input type="checkbox"/>		Input
AEDAT	ERDAT	DATS	<input type="checkbox"/>		Input
ERNAM	ERNAM	CHAR	<input type="checkbox"/>		
PINCR	PINCR	NUMC	<input type="checkbox"/>		
LPONR	LPONR	NUMC	<input checked="" type="checkbox"/>	EKPO	Input
LIFNR	ELIFN	CHAR	<input checked="" type="checkbox"/>	LFA1	Input
SPRAS	SPRAS	LANG	<input checked="" type="checkbox"/>	T002	Input

Step 4: Select the check table name corresponding to the field. This check table provides the configuration path required to configure the field correctly.

Transparent Table		EKKO	Active		
Short Description		Purchasing Document Header			
Attributes	Delivery and Maintenance	Fields	Entry help/check	Currency/Quantity Fields	
		Search Help			
Field	Data element	Data Ty...	Foreign K...	Check table	Orig
MANDT	MANDT	CLNT	<input checked="" type="checkbox"/>	T000	Inp
EBELN	EBELN	CHAR	<input type="checkbox"/>		Exp
. INCLUDE	EKKODATA		<input type="checkbox"/>		
BUKRS	BUKRS	CHAR	<input checked="" type="checkbox"/>	T001	Inp
BSTYP	EBSTYP	CHAR	<input type="checkbox"/>		Inp
BSART	ESART	CHAR	<input checked="" type="checkbox"/>	T161	Inp
BSAKZ	BSAKZ	CHAR	<input type="checkbox"/>		Inp
LOEKZ	ELOEK	CHAR	<input type="checkbox"/>		
STATU	ESTAK	CHAR	<input type="checkbox"/>		Inp

Step 5: Proceed to transaction code SM30, which is the Maintenance View. This transaction allows for maintenance and configuration of database tables. Enter Check table name and click on customizing

Maintain Table Views: Initial Screen

Find Maintenance Dialog

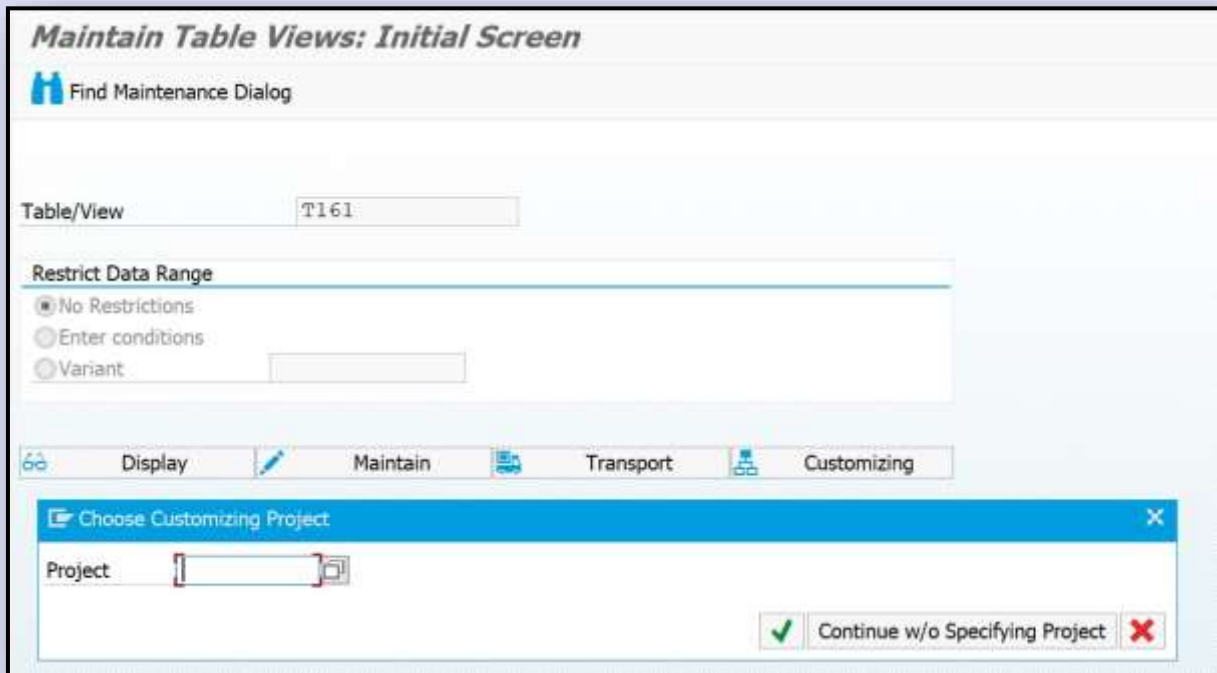
Table/View

Restrict Data Range

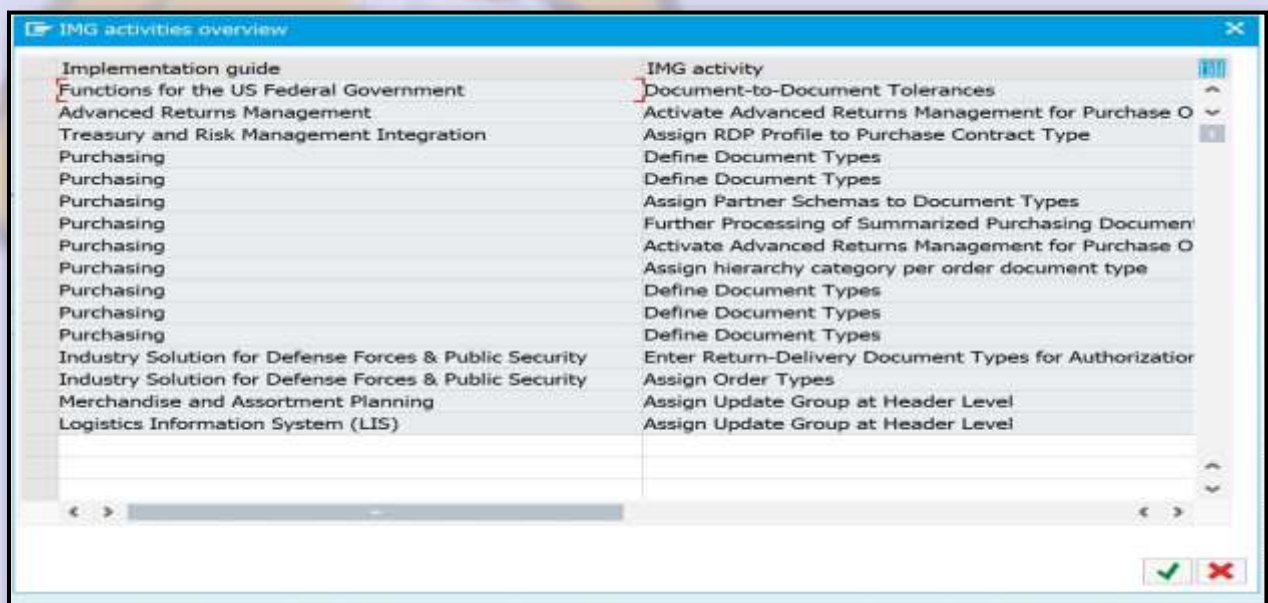
No Restrictions
 Enter conditions
 Variant

Display
 Maintain
 Transport
 Customizing

Step 6: click on Continue w/o specifying project






Step 7: By following the above steps, you will be directed to the configuration path relevant to the desired field, enabling you to make the necessary configurations.



Step 8 : Double click on IMG activity(step7) , you will be redirected to SPRO path

Display IMG

Existing BC Sets

BC Sets for Activity

Activated

Structure

- v
📄 Purchase Order
 - 📄 ✔ Define Number Ranges
 - 📄 ✔ Define Document Types
 - 📄 ✔ Set Tolerance Limits for Price Variance
 - > 📄 Release Procedure for Purchase Orders
 - 📄 ✔ Define Screen Layout at Document Level
 - > 📄 Texts for Purchase Orders
 - 📄 ✔ Define Tolerance Limit for Archiving
 - > Set up Stock Transport Order
 - 📄 ✔ Set Up Subcontract Order

One Bonus tip

There is one more simple method to find Customization path for any field 1.Open any document number

📄

Standard PO 4500026382 Created by CHAITANYA003

Document Overview On 📄 🔍 📄 🖨️ Print Preview ✉️ Messages ℹ️ 👤 Person

🛒 NB Standard PO v 4500026382 Vendor 103472 sms steel

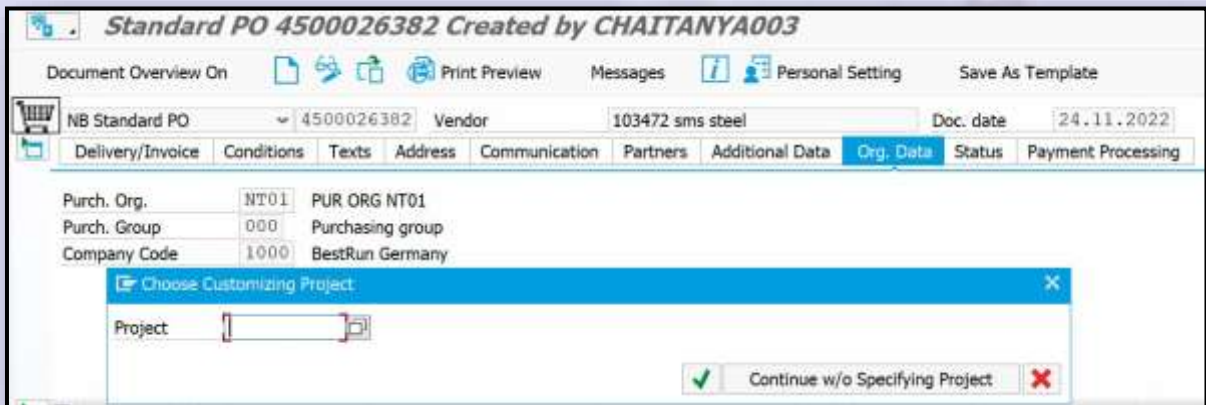
📄 Delivery/Invoice 📄 Conditions 📄 Texts 📄 Address 📄 Communication 📄 Partners 📄 Additional Data

Purch. Org.	NT01	PUR ORG NT01	
Purch. Group	000	Purchasing group	
Company Code	1000	BestRun Germany	

2. Suppose i want to check configuration for purchasing organization , press F1 and click on customizing.



3. Click on continue w/o specifying project



THANK YOU



- **Corporate Training**
- **Instructor LED Training**
- **Seminars & Workshop Internship**
- **Mock Interview**
- **Customised Courses**
- **Project Support For Implementation**
- **Staff Augmentation And Talent**



SAP Knowledge Hub